



# Professional Monitor with NDI®



**BM-215-NDI**  
21.5-inch QLED, 100% DCI-P3 WCG



**BM-245-NDI**  
23.8-inch QLED, 100% DCI-P3 WCG

## Features

### FHD Wide Color Gamut QLED Panel

The NDI® monitors adopts FHD QLED panel, 100% DCI-P3 coverage Wide Color Gamut, 400nits backlight, 1000:1 contrast for professional productions.

BM-215-NDI	21.5-inch	1920x1080	400nits	100% DCI-P3
BM-245-NDI	23.8-inch	1920x1080	400nits	100% DCI-P3

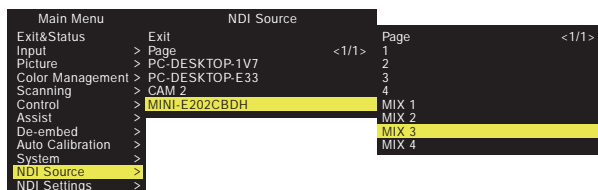
### NDI®, SDI and HDMI

Support high bandwidth NDI® sources up to 4K 2160p30, and decoded to 3GSDI output. In addition, the monitors have 3GSDI 2-in 1-loop, and HDMI 2.0 4K 2160p60 input. The NDI®, SDI and HDMI sources can be PIP or PBP displayed simultaneously.



### NDI® Sources Auto Detect and Discover Server Support

All NDI® sources will be auto detected when the monitor is connected to NDI® network. Supports Discover Server to pull NDI® sources from different IP segments.



### NDI® Low Bandwidth Mode Support

Switch on the Low Bandwidth mode of the NDI® monitors to display low bandwidth prvw channel of the NDI® source.

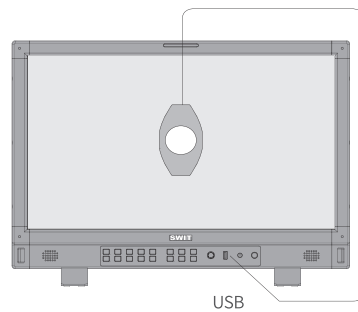


### NDI® Embedded Audio Meters Display

Display 2 channels Audio meters that embedded into NDI® sources.

### 3DLUT Auto Self-Calibration

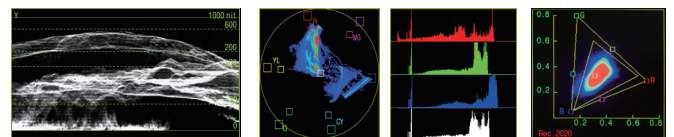
Built-in calibration software, supports X-rite i1 and JETI Specbos 1211 probes directly plug into monitor USB port to auto calibrate. Calibration time: X-rite i1: 15min; Specbos1211: 45min. Calibration result:  $\Delta E < 1.0$



Built-in 3DLUT calibration software, Directly connect color sensor probe to monitor USB port, and the monitor will calibrate itself automatically.

### Video Assist Patterns

Waveform and single line selection, Vector scope, Histogram and Color Gamut patterns, supports multiple display position, size and color selection for the patterns.



Y/Cb/Cr/R/G/B Waveform with nits Support single line waveform Vector Scope R/G/B/Y Histogram Rec. 709/2020 Color Gamut Pattern

### Others

HLG/PQ/S-log3 HDR and Gamma 1.0/1.8/2.2/2.4/2.6 SDR EOTFs; Rec.709 / DCI-P3 / Rec.2020 color gamut selection; User 3DLUT cubes upload by USB; Focus assist, R/G/B/mono, False color, Zebra, Freeze frame; 15:9, 14:9, 13:9, 4:3, 2.35:1, 2:1, 1.85:1 and User defined markers; TSL 3.1/4.0 UMD and text TALLY display; On-board V-mount battery plate (Gold mount for option); GPI control and webserver IP control, USB firmware updates.



- ◆ Quick Select NDI® Sources
- ◆ Built-in NDI® to SDI Decoder
- ◆ 100% DCI-P3 WCG QLED Panel
- ◆ 3DLUT Self Calibration,  $\Delta E < 1.0$
- ◆ Professional Monitor Tools

## Video Formats

### NDI®

4096 × 2160p (30 / 29.97 / 25 / 24 / 23.98)  
 3840 × 2160p (30 / 29.97 / 25 / 24 / 23.98)  
 2048 × 1080p (60 / 59.94 / 50 / 30 / 29.97 / 25 / 24 / 23.98)  
 2048 × 1080i (50 / 59.94 / 60)  
 1080p (60 / 59.94 / 50 / 30 / 29.97 / 25 / 24 / 23.98)  
 1080i (60 / 59.94 / 50)  
 720p (60 / 59.94 / 50)

### NDI® Decoded to SDI OUT

2048 × 1080p (60 / 59.94 / 50 / 30 / 29.97 / 25 / 24 / 23.98)  
 2048 × 1080i (50 / 59.94 / 60)  
 1080p (60 / 59.94 / 50 / 30 / 29.97 / 25 / 24 / 23.98)  
 1080i (60 / 59.94 / 50)  
 720p (60 / 59.94 / 50)

### SDI IN 1/2 and LOOP

2048 × 1080p (60 / 59.94 / 50 / 30 / 29.97 / 25 / 24 / 23.98)  
 2048 × 1080i (50 / 59.94 / 60)  
 1080p (60 / 59.94 / 50 / 30 / 29.97 / 25 / 24 / 23.98)  
 1080i (60 / 59.94 / 50)  
 1080psf (30 / 29.97 / 25 / 24 / 23.98)  
 720p (60 / 59.94 / 50)  
 480i (59.94) 576i (50)

### HDMI IN (2.0)

4096 × 2160p (60 / 59.94 / 50 / 30 / 29.97 / 25 / 24 / 23.98)  
 3840 × 2160p (60 / 59.94 / 50 / 30 / 29.97 / 25 / 24 / 23.98)  
 1080p (60 / 59.94 / 50 / 30 / 29.97 / 25 / 24 / 23.98)  
 1080i (60 / 59.94 / 50)  
 720p (60 / 59.94 / 50)

## Specifications

Model	BM-215-NDI	BM-245-NDI
<b>Display</b>		
LCD size	21.5 inches	23.8 inches
Resolution	1920 × 1080	1920 × 1080
Aspect Ratio	16:9	16:9
Color Depth	10bit (8+2FRC)	10bit (8+2FRC)
Color Gamut	100% DCI-P3	100% DCI-P3
Viewing angle	H/V 178/178	H/V 178/178
Brightness & Contrast	400nits, 1000:1	400nits, 1000:1
<b>Interfaces</b>		
NDI®	High bandwidth 4K NDI® RJ45 × 1	
NDI® to SDI OUT	3G/HD-SDI output × 1	
SDI IN1 & IN2	3G/HD-SDI input × 2	
SDI LOOP	3G/HD-SDI loop out × 1	
HDMI IN	HDMI 2.0 input × 1	
Audio OUT	3.5mm headphone + Speaker	
UMD	RS485 input & output	
GPI (Tally)	RS485 input	
USB-A	Calibration Probe, 3DLUT upload & Firmware upgrade	
<b>General</b>		
AC Input	AC 100-240V, 50/60Hz, 0.8A	
DC Input	DC 12-17V, V-mount plate	
Power	≤ 45W	
Working environment	0°C - +40°C; 10% - 90%	
Storage environment	- 15°C - + 60°C; 10% - 90%	
Dimensions	530.6 × 364.3 × 74.2mm	580.9 × 392.3 × 73.6mm
Weight	6.05kg	6.7kg

