

# FILME-FX3

## System Software (Firmware)

**Update Ver.4.00**

### Applicable Models

- FILME-FX3

### File Info

File Name

BODYDATA.DAT

File Version

**Ver. 4.00**

File Size

**789,282,200 bytes**

### Release Date

- **09-12-2023**

# Preparation

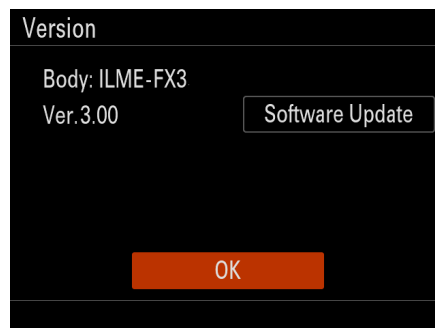
## Check the system software version

Follow the instructions below to check the system software version. If the system software version is **Ver.4.00**, the update is not required.

Note: When updating from "**Ver.2.02**" or earlier, you need to update to "**Ver.2.04**" or "**Ver.2.05**" first. Please update to "**Ver.4.00**" after updating to "**Ver.2.04**" or "**Ver.2.05**." If you try to update this version without updating to "**Ver.2.04**" or "**Ver.2.05**," an error will occur and you will not be able to update.

Note: If the date/time setting screen appears when you turn on your camera, be sure to set the date/time.

1. Select Menu → Setup → Setup Option → Version.
2. The system software version is displayed as illustrated below.



## Saving system software data to memory card

**WARNING!** Make sure that there is only one **BODYDATA.DAT** file on the memory card.


**Note:** Once you format the memory card, all the data recorded on the memory card will be deleted and cannot be restored. Before formatting, copy the data to a computer or other device. Please refer to the instruction manual of the camera for compatible memory cards.

1. Click the Download button.
2. After reading the disclaimer, click Download.
3. Save the file to your computer.
4. Insert the formatted memory card into a computer.
5. Save the BODYDATA.DAT file in the root directory of the memory card.

**Note:** Do not change the file name.

## Other Hardware.

- Power source for the camera.
  - Fully charged rechargeable battery pack NP-FZ100.
- Note: The update can only be performed when the battery power level

is  three bars (or more) or above 51%. We recommend that you use a fully charged battery.

# Updating the System Software Version

## Important Notice

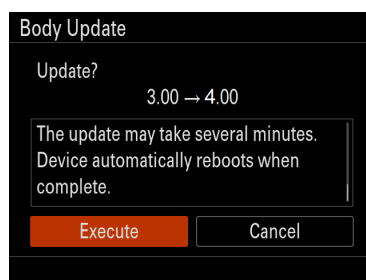
- Use a fully charged rechargeable battery pack (NP-FZ100).
- Do not remove the battery during the update as the sudden loss of power may render the camera inoperable.
- It may not be possible to update if the camera temperature is high. Please go after the temperature drops

## Step1: How to download the Updater:

1. Insert the memory card on which the system software data was saved, into slot 1 of the unit.

Note: Only slot 1 recognizes the system software data.

2. Select Menu → Setup → Setup Option → Version and select Software Update.
3. Select Execute on the system software update confirmation screen, and version update starts.



Note: A Version Update X.XX → Y.YY message appears (X.XX: existing version number, Y.YY: latest version number).

Note: Do not remove the battery and the memory card during the update.

After reading the notes to the end, you can click "Execute".

Please scroll the screen as necessary to view the full text.

- When the system software update starts, black screen is displayed and the access lamp flashes. The access lamp flashes 1time → 3times → 5times depending on the progress of the update. The update will take approximately 6 minutes to complete.



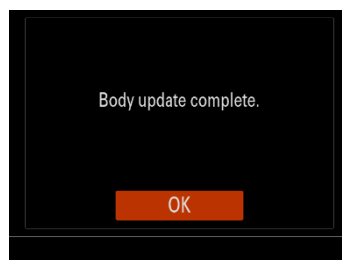
Access lamp

Note: If the system software data copy is incorrect, "The target model for the update file is incorrect." will be displayed on the monitor of the camera.

Note: If the access lamp repeats 5 long blinks (0.5sec. cycle) and 6 short blinks (0.25sec. cycle), the system software may not have been copied correctly to the memory card.

In this case, remove the battery and memory card from the camera, and start over from "Saving system software data to memory card".

- When the update is completed, the camera will automatically restart. After restarting, when the Body update complete screen appears, press OK.



## Step 2: Confirm the system software version of your device.

1. On the camera, select Menu → Setup → Setup Option → Version.
2. The system software version is displayed as illustrated below.

