

Dual-Module Desktop

Single-Module Desktop

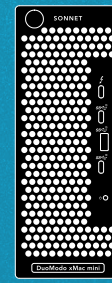
Modular Thunderbolt Expansion Systems for the Desktop and for Rack Installation

DuoModo™

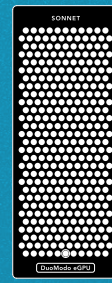
Modular Design • Flexible Configuration • Countless Possibilities



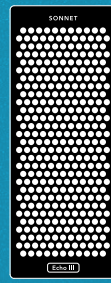
Dual-Module Rackmount



xMac mini Module



eGPU Module



Echo III Module

Dual- and Single-Module Desktop & Rackmount Enclosures

Interchangeable Modules

Imagine the Possibilities

Customize configurations to best suit your workflow

Pro Tools Workstation



Dual-Module Desktop Or Rackmount Enclosure

+ xMac mini Module

+ Echo III Module



Integrate a complete 2- or 3-card Pro Tools | HDX system and a Mac mini on the desktop or in just 2U of rack space



Built-in dock adds three front panel 10Gbps USB ports, and one Thunderbolt Port, plus internal storage expansion capability



Mac mini not included

Immersive Audio in the Project Studio



Dual-Module Desktop Or Rackmount Enclosure

+ eGPU Module

+ Echo III Module



Add a GPU card for acceleration of NLE timelines

Add a 2- or 3-card Pro Tools | HDX system for multi-track immersive audio sound editing

GPU and HDX PCIe cards not included

Perfect for full-service Project Studios

Rack it up with a Mac mini with Intel processor in a RackMac mini



Compact Desktop or 2U Rackmount Graphics Workstation

Dual-Module Desktop Or Rackmount Enclosure

+ xMac mini Module

+ eGPU Module



▼ Combine an Intel Mac mini with one of AMD's next-gen, high-performance GPUs

▼ Alternative Configuration: Dual eGPUs deliver even more performance for the most demanding workflows



Scan QR code for product details



DuoModo

Enclosures and Modules

Mix and match modules with an enclosure

Dual-Module Desktop Enclosure



DM-ENC-2M-D ▶

Rugged aluminum construction
6.9" wide by 16.7" deep x 9.1" high
(17.4 x 42.2 x 23.2 cm)

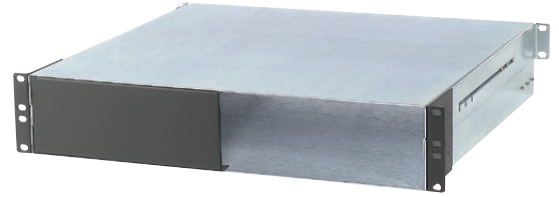
Single-Module Desktop Enclosure



DM-ENC-1M-D ▶

Rugged aluminum construction
3.5" wide by 16.7" deep by 9" high (8.9 x 42.2 x 23.1 cm)
Same enclosure used in Echo III Desktop

Dual-Module Rackmount Enclosure



▶ DM-ENC-2M-R

Rugged steel construction
19" wide by 16.5" deep x 3.5" (2U) high
(48.3 x 41.9 x 8.9 cm)
Same enclosure used in Echo III Rackmount

Echo™ III Module

3-Slot Thunderbolt to PCIe Card Expansion Module



◀ DM-MOD-E3

Same module used in Echo III Desktop and Rackmount systems
400W power supply with 75W auxiliary power connector
Supports up to three Avid Pro Tools | HDX PCIe cards (or other PCIe cards)

xMac™ mini Module

Mac mini Mounting Module + Thunderbolt SSD Storage Dock



◀ DM-MOD-ZM

Securely holds Intel or M1 Mac mini in horizontal or vertical orientation
Built-in 40Gbps Thunderbolt 3 dock

- ▶ One Thunderbolt port, one 10Gbps USB Type A and two 10Gbps USB Type-C ports on the front panel
- ▶ M.2 NVMe PCIe SSD sockets; securely install two SSDs inside the enclosure for up to 16TB of fast storage
- ▶ Internal 10Gbps USB Type A port securely connects an iLok, thumb drive or bus-powered storage drive

eGPU Module

Thunderbolt to eGPU Card Expansion Module



◀ DM-MOD-GPU

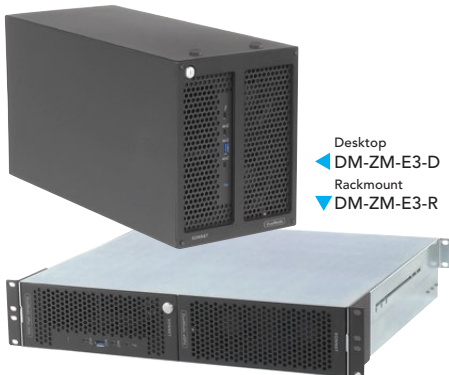
Supports Thunderbolt compatible eGPU cards
800W power supply, future-proof design
40Gbps Thunderbolt 3 interface offers 2750 MB/s of PCIe bandwidth to installed GPU card

DuoModo

Pre-Configured Systems

Ready-to-go workflow solutions

DuoModo xMac mini / Echo III Desktop & Rackmount



Desktop
◀ DM-ZM-E3-D
Rackmount
▼ DM-ZM-E3-R

Echo III Desktop & Rackmount



Desktop
◀ ECHO-3D-TB3
Rackmount
▼ ECHO-3R-TB3

DuoModo xMac mini / eGPU Desktop & Rackmount



Desktop
◀ DM-ZM-GPU-D
Rackmount
▼ DM-ZM-GPU-R

Dual-Module Desktop Or Rackmount Enclosure + xMac mini Module + Echo III Module

Single-Module Desktop Enclosure Or Dual-Module Rackmount Enclosure + Echo III Module

Dual-Module Desktop Or Rackmount Enclosure + xMac mini Module + eGPU Module