



www.hahnel.ie

CAPTUR Range

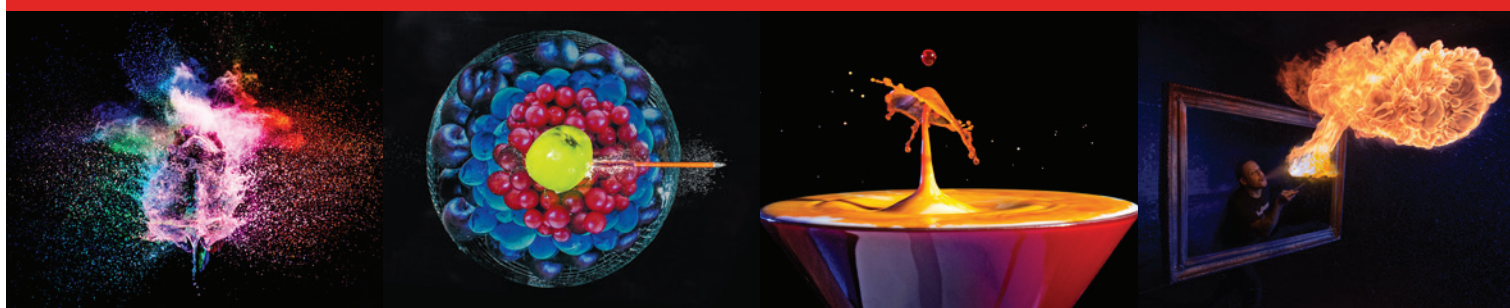
Remote Control Range for DSLR's



Prepare to be amazed



Previous Awards for Captur Range



The Captur range will take your photography skills on to the next level and open your eyes to a whole new world of creativity.





For Canon:
1000 710.0



For Nikon:
1000 710.1



For Sony:
1000 710.2



For Oly/Pana:
1000 710.3



For Fuji:
1000 710.4



Wireless Remote control up to 100m range

Combining two products in one - a wireless remote shutter release and a remote flash trigger



Wireless Flash Remote control up to 100m range



- Wireless Remote Shutter Release for DSLR cameras
- Wireless Remote Control for DSLR flashgun
- Interchangeable Camera connector cables included per brand
- Autofocus & Shutter Release with Continuous shooting & Bulb Mode
- Additional receivers available to trigger multiple flashguns or cameras
- Additional Captur accessories available to capture Time-lapse Photography, High Speed Photography and Motion & Wildlife Photography
- Powered by AA batteries
- DCM - Digital Channel Matching

Extra Receivers



For Canon:
1000 710.5



For Nikon:
1000 710.6



For Sony:
1000 710.7



For Oly/Pana:
1000 710.8



For Fuji:
1000 711.0



QR Code Technology

Scan the QR code for more product information



CAPTUR

Module - Timer



Captur Module - Timer 1000 708.3



Wireless: Requires Captur (Sold Separately)

Wireless Timer Remote



- Wireless Remote Shutter Release and Timer Remote
- Timer Remote ideal for time-lapse photography. Whether it's a blooming flower, changing landscapes, the options are endless
- Fully programmable timed sequence of delay timer, interval timer, exposure count and exposure length setting
- Wireless* Remote Shutter Release with auto-focus, single & continuous shooting and bulb mode lock option.
- Connect wirelessly to the camera using the "Captur" (Sold separately)
- DCM - Digital Channel Matching

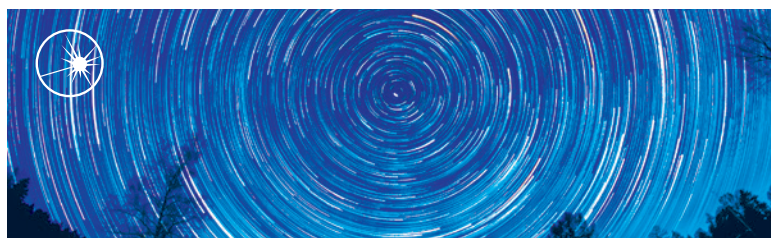
Endless Possibilities

Time Lapse Photography

Landscapes, cloudscapes, slow growing plants & more come to life using time lapse photography. You can take multiple photographs at intervals over a long period of time & edit into a moving sequence. All of which is possible using the Module Timer.

Long Exposure

This type of photography can bring real life into your photographs by capturing moving objects with longer exposure times. Use the Module - Timer to create fantastic shots of starscapes, landscapes, seascapes & more.



QR Code Technology

Scan the QR code for more product information



CAPTUR

Module - Pro



The **Module - Pro** has a built-in motion, light and sound sensor as well as a AUX socket to connect 3rd party sensors such as pressure plates. Also included is the **Module - IR** which can trigger the camera when a moving subject breaks the beam. Ideal for wildlife and sport's photography.



Module - Pro

1000 708.1



Built-in Sensors

Light

Capture sudden changes in light levels using the Module Pro. Ideal for lightening and fireworks. The built in light sensor can trigger your camera or flash when the light level goes above or below a certain level



Laser

The laser sensor of the Module Pro easily detects when something breaks the laser beam. Great for capturing water droplets, macro and wildlife shots.



Sound

This sensor of the Module Pro can trigger your camera or flash when it detects a sound. Capture glass shattering, a balloon popping & more.



Infrared

The built in infra-red sensor can be set up to trigger your camera when something breaks through the beam. Fantastic for wildlife and sports photography & even water droplets hitting the surface.



Wireless Universal Trigger Remote

- Captures Time Lapse Photography, High Speed Photography, Motion & Wildlife Photography
- Four built-in sensors (light, sound, Laser* & IR)
- Fully programmable timed sequences including delay, interval timer, exposure count & exposure length setting
- Shutter release button with autofocus, single & continuous shooting & bulb mode
- Connect wirelessly to camera with the use of the "Captur" (Sold separately)
- DCM - Digital Channel Matching

* Laser pointer sold separately

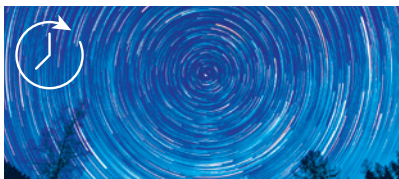


Module - IR

Endless Possibilities

Time Lapse Photography

Landscapes, cloudscapes, slow growing plants & more come to life using time lapse photography. You can take multiple photographs at intervals over a long period of time & edit into a moving sequence. All of which is possible using the Module - Pro.



Long Exposure

This type of photography can bring real life into your photographs by capturing moving objects with longer exposure times. Use the Module - Pro to create fantastic shots of starcapes, landscapes, seascapes & more.



AUX

Auxiliary port allows you to connect 3rd party sensors such as pressure plates, Humidity & Temperature sensors



QR Code Technology

Scan the QR code for more product information





New Cable Sets for CAPTUR



If a consumer is interested in purchasing just the **Captur Module Pro**, they would need to purchase the branded **Cable Set & connect the Module Pro direct to the camera**.

For wireless connection, they would need to purchase the branded **Cable Set, Pro Module & Receiver**.

These cables are also compatible with the **Giga T Pro II**.



Product Name	Part No.	EAN Code
Cable Pack Canon	1000 714.0	5099113007148
Cable Pack Nikon	1000 714.1	5099113107145
Cable Pack Sony	1000 714.2	5099113207142
Cable Pack P/Oly	1000 714.3	5099113307149
Cable Fuji	1000 714.4	5099113407146



QR Code Technology

Scan the QR code for more product information





For Fuji



PT No. 1000 710.4



Module - Timer

compatible with
Canon, Nikon, Sony,
Olympus/Panasonic & Fujifilm
Captur Kits
(sold separately)

PT No. 1000 708.3



CAPTUR

For Fuji
available for
Fuji Captur Kit
(sold separately)

PT No. 1000 711.0

DSLRs Accessories A4-22-06-20