



Easy Screen-to-Print Color Matching Tool

QUICK COLOR MATCH

**Easy**

# Screen-to-Print Color Matching Guide

Let's begin!



**There are many ways to work with and enjoy printed photos.**



**Creating postcards using your favorite shots**



**Entering your work in photo competitions**

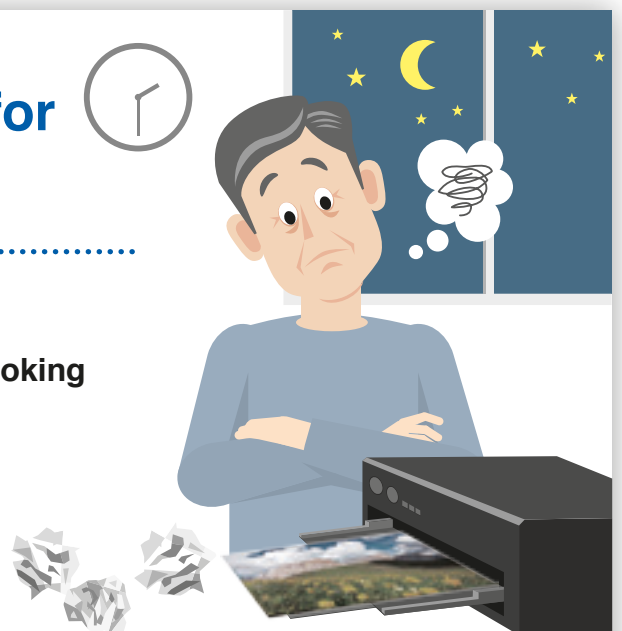


**Making a photo album to share with family and friends**

**But without a monitor suited for color matching photos...**



**The colors you carefully retouched will print out looking different than intended.**



**This results in a lot of wasted time doing multiple prints trying to get the correct color.**

# Having an easy and reliable color matching system makes printing photos more enjoyable!



Photo shown on the monitor

=



Photo printed out on an inkjet printer

- ✓ Reduce the time and cost of making multiple prints
- ✓ Retouch your photos with confidence

**This guide explains how you can achieve easy color matching for accurate prints with no hassle!**



# Steps to Achieve Color Matching

---

## Monitor Adjustment



## Retouching Software Settings



Going through each setting is a hassle.

**It is not only important to adjust the monitor, but also to select the correct settings for your retouching software and printer. With even one misstep, your photos may not print with the correct colors.**

## Printer Settings



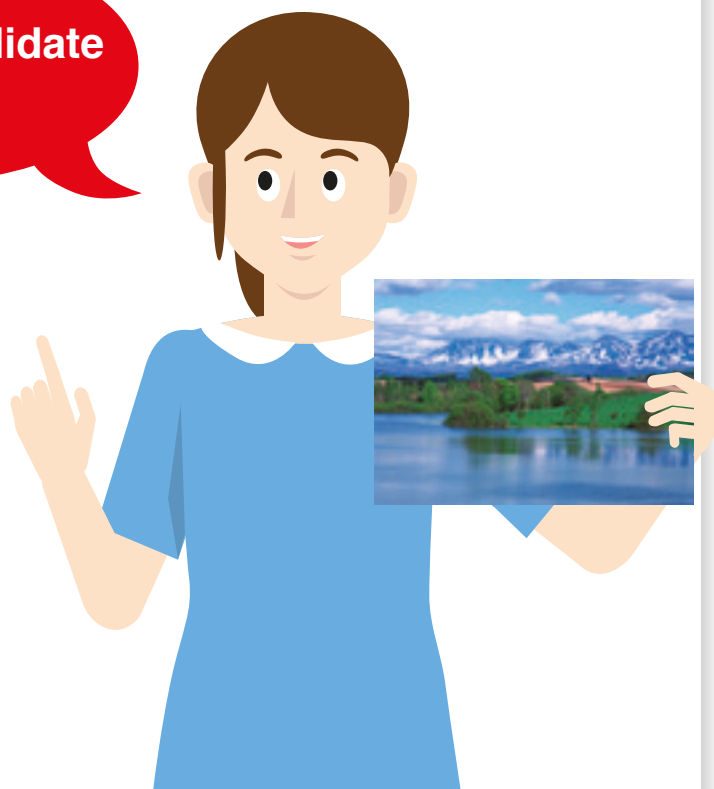
## Environment Preparation



We can consolidate these steps!

Introducing a unique software solution that automatically configures the monitor, retouching software, and printer settings for you.

QUICK COLOR MATCH



See next page. 

## EIZO's Screen-to-Print Color Matching Software

# QUICK COLOR MATCH

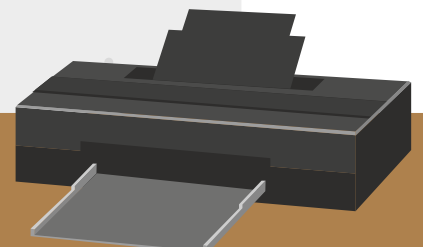


**Quick Color Match is EIZO's own software solution that greatly simplifies the color matching process for photo enthusiasts and professionals alike. It was developed under a first-ever collaboration between EIZO and Adobe, Canon, and Epson.**

Quick Color Match automatically adjusts to the ideal monitor, retouching software, and printer settings so you can focus on editing your photos and print your work quickly and hassle-free.

- ☒ **Monitor Settings**
- ☒ **Retouching Software Settings**
- ☒ **Printer Settings**

Automatically adjusted!



## 1 Preparation for Color Matching

**Color Management Monitor**



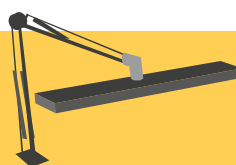
8 - 9

**PC Requirements, Printer, Printer Paper, Retouching Software**



10 - 11

**Lighting**



11 - 12

## 2 Monitor Connection and Software Installation

**Printer Driver Installation**

14 - 15

**Print Plugin Software and Quick Color Match Installation**

16 - 17

## 3 Easy Color Matching

**Using Quick Color Match**

Let's try

18 - 19



**Matching  
Complete**

**Now you can easily match  
your prints to your screen!**



# Preparation for Color Matching

A suitable monitor is needed when matching the color of your prints to the screen.

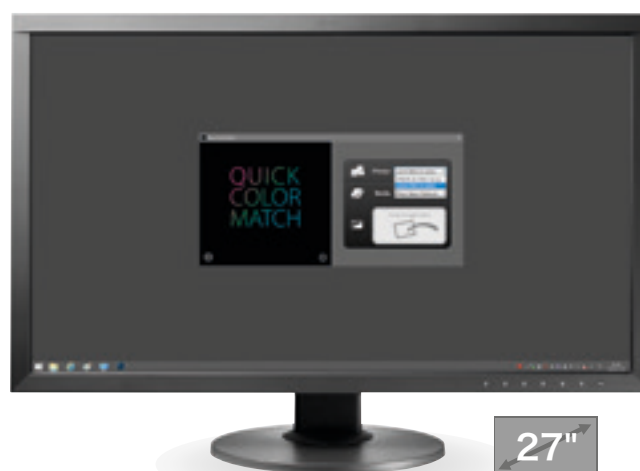
## Color Management Monitor

Monitors Supported by Quick Color Match

Recommended Models!



ColorEdge® CS2420



ColorEdge® CS2730

CS230    CG247X    CG2420    CG279X    CG2730

### Ample Screen Size for Creative Work

The CS2420 can display two A4 pages plus tool palettes on its 24.1-inch screen. The CS2730 gives you even more room to work with its spacious 27-inch screen.

### Monitor Features

- 1 99% Adobe RGB Coverage  
Images shot in Adobe RGB or sRGB will be displayed correctly.
- 2 Smooth Gradations
- 3 Uniform Brightness and Color



# Choosing the Right Monitor

## 1 Displays the Correct Color Space

It is important to select a monitor that correctly displays Adobe RGB and sRGB to reproduce colors faithfully.

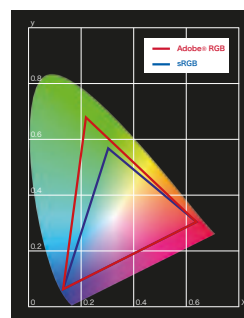
## 2 Displays Gradations Smoothly

In order to display solid colors and depth perception with high accuracy, a monitor that displays smooth gradations without banding is needed.

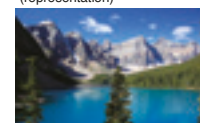
## 3 Displays Uniform Brightness and Color

A monitor that has been adjusted in advance to correct uniformity errors is most appropriate to ensure brightness and color are even across the screen. It is also important that it counterbalances changing color temperature and brightness due to the passage of time.

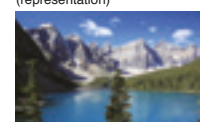
■ Results vary depending on model and environment.



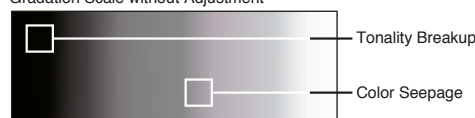
Adobe RGB Color Space (representation)



sRGB Color Space (representation)



Gradation Scale without Adjustment



Gradation Scale After Adjustment



Without Uniformity Correction



With Uniformity Correction

**Did you know?**  **Before installing!**

**Confirm that your ColorEdge monitor is correctly connected to your PC.**



Desktop PC



Notebook PC



All-in-One PC

### 1 Confirm the available output connections

When using an all-in-one PC, confirm that you have the appropriate outputs and check which cables come with your monitor. If your monitor's cables do not match your PC's available outputs, you may need to obtain additional cables.

### Example of a notebook PC's output terminals



### 2 Check the maximum resolution

Referring to your PC's user manual, choose a monitor with the appropriate resolution supported by the available outputs.

### Types of PC outputs



DisplayPort



HDMI



DVI



Thunderbolt(1~2) /  
Mini-DisplayPort



USB Type-C /  
Thunderbolt 3

# Preparation for Color Matching

## PC Requirements

- **Windows** Windows 10 / 8.1 / 7
- **Mac** macOS High Sierra (10.13) / macOS Sierra (10.12) / OS X El Capitan (10.11) / Yosemite (10.10) / Mavericks (10.9)

## Printer

### Canon



### PIXMA PRO-10S

Gallery-quality A3+ photo printer with 10-ink system.

PIXMA PRO-1  
PIXMA PRO-10  
PIXMA PRO-100  
PIXMA PRO-100S  
imagePROGRAF PRO-1000

### Epson



### SC-P600

Professional A3+ printer with Epson UltraChrome HD ink technology for unsurpassed quality.

SC-P800  
SC-P400  
Stylus Photo R3000  
Stylus Photo R2000

■ Printer availability varies by country. See printer manufacturer for details.

## Retouching Software



**Adobe Photoshop  
CC / CS6**

### Other Supported Retouching Software

#### Canon

- Adobe Photoshop Lightroom
- Adobe Photoshop Elements
- Canon Digital Photo Professional

#### Epson

- Adobe Photoshop Lightroom
- Adobe Photoshop Elements
- Nikon ViewNX-i

When using the above retouching software, confirm colors on the print plugin window.

## Printer Paper

### Canon Paper

Photo Paper Platinum  
Photo Paper Plus Glossy  
Photo Paper Pro Luster  
Photo Paper Pro Premium Matte  
Photo Paper Plus Semi-Gloss  
Matte Photo Paper

### Epson Paper

Velvet Fine Art Paper  
Ultra Smooth Fine Art Paper  
Premium Glossy  
Premium Semigloss  
Premium Luster  
Achival Matte  
Matte

### ILFORD Paper

ILFORD Gold Fibre Silk  
ILFORD Gold Fibre Gloss  
ILFORD Smooth Cotton Rag  
ILFORD Textured Cotton Rag  
ILFORD Smooth Pearl  
ILFORD Smooth Gloss

### Pictorico Paper

Pro Hi-Gloss White Film  
Pro Hi-Gloss Photo Paper  
Pro Semi-Gloss Paper  
Pro Cotton Paper  
Pro Soft-Gloss Paper  
Pro Design Paper Plus  
GEKKO Blue

### Hahnemühle Paper

FineArt Baryta  
Photo Rag Baryta  
Photo Rag (188, 308, 500, Duo)  
Photo Rag Bright White  
Photo Rag Ultra Smooth  
German Etching  
Hahnemühle Photo Luster  
Hahnemühle Photo Matt Fibre

### SIHL Paper

Metallic Pearl High Gloss Photo Paper 290  
High Gloss Photo Paper 330  
Lustre Photo Paper 300  
Lustre Duo Photo Paper 330  
Satin Baryta Paper 295  
Smooth Matt Cotton Paper 320  
Textured Matt Cotton Paper 320

### Tecco Paper

PHOTO PM230 Matt  
PHOTO PL285 Luster  
PHOTO PUW285 Ultra White  
PHOTO PFR220 DUO Fine Art Rag  
PHOTO GB330 Galleryboard  
PHOTO BT270 Baryt  
PHOTO BMT275 Baryt Matt

Papers supported by Quick Color Match vary depending on the printer model.  
To see which papers are supported by your printer, visit: [www.eizoglobal.com/i/qcm-paper/](http://www.eizoglobal.com/i/qcm-paper/)

See the Quick Color Match user's manual for how to add additional papers: [www.eizoglobal.com/i/qcm-manual/](http://www.eizoglobal.com/i/qcm-manual/)

### Did you know?



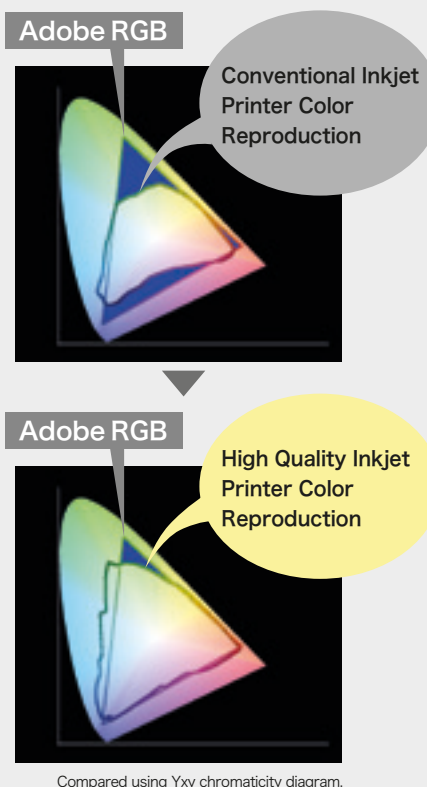
## Why a printer that supports color management is important

### It can faithfully print Adobe RGB or sRGB images.

Adobe RGB is a wide color space that captures more vivid colors in images. If you use a conventional printer with a narrow color space, some of the brilliant blues and greens in your photos will be lost in the printing process. By using a high-quality printer, color reproduction is greatly improved so you can achieve prints that match your screen.

### Consistent Color After Printing

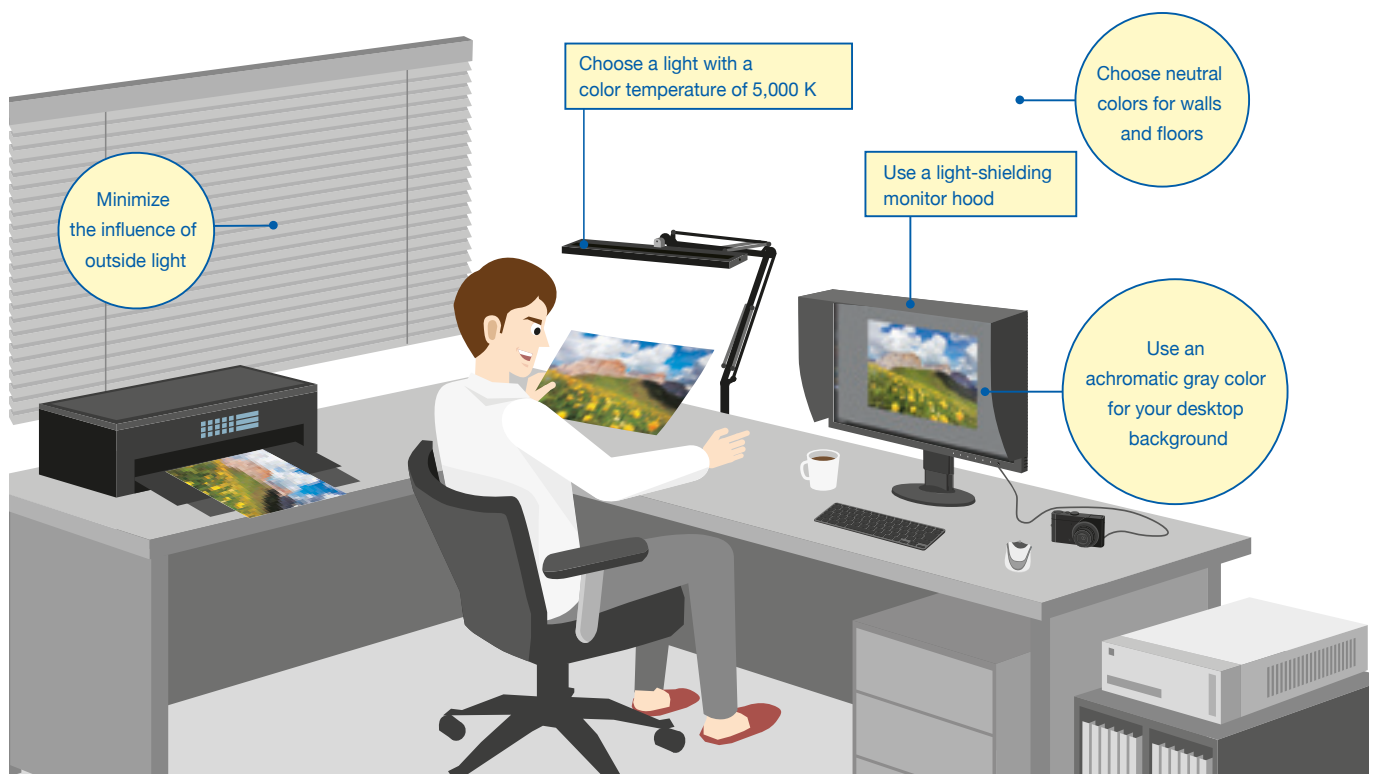
Using a color printer with quickly drying ink ensures that colors are consistent. This makes it easier to check your work right after printing.



# Preparation for Color Matching

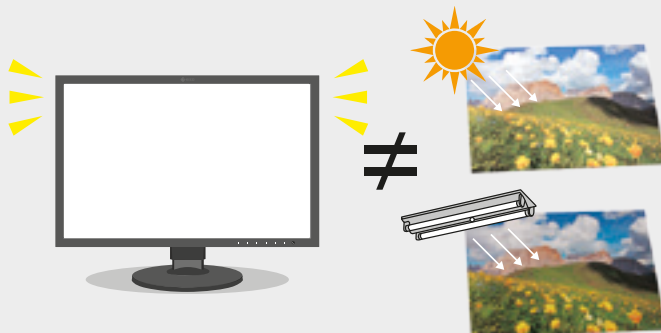
In order to check that your photos are printed with the correct colors, you need to view the prints under a light source with a 5,000 K color temperature.

## Lighting



### Did you know?

**Printed photos reflect the light around them and travel to the human eye where they are recognized as an image.**

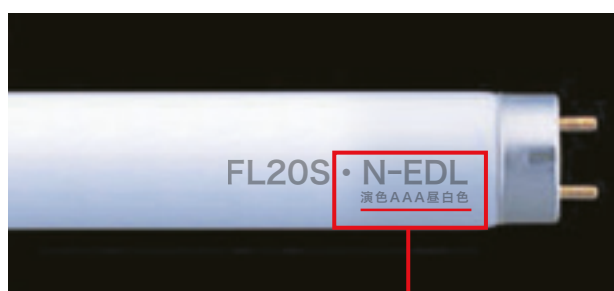


Due to this, when viewing objects in outside light during the day and indoor lighting in the evening, the color of the light changes.

Monitors emit light from their backlights so even if the ambient lighting conditions change, the colors you see on the screen will have little variance. This is why comparing your photo prints to the screen under varying ambient lighting conditions may cause the colors to look different.

## Choosing Appropriate Lighting

The appropriate viewing environment can be achieved by using a color temperature that is close to "sunlight" (5,000 K). This value is based on the human sense of color.



Bulbs that meet the color temperature standard of 5,000 K can be found through general electronic retailers. Below is EIZO's recommendation.

---

**N-EDL... AAA Day white color rendering (Ra: 90-99)\***

---

\*Color rendering index (Ra) refers to a quantitative measure of the ability for a fluorescent light to reproduce the colors we see in natural light.

## Prevent Glare with a Light-Shielding Hood

When comparing prints to your screen, glare on the monitor due to ambient lighting can cause colors to appear differently.

If you use a light-shielding monitor hood, you can prevent glare and reflections on the screen to carry out color matching more accurately.

EIZO Monitor Hoods

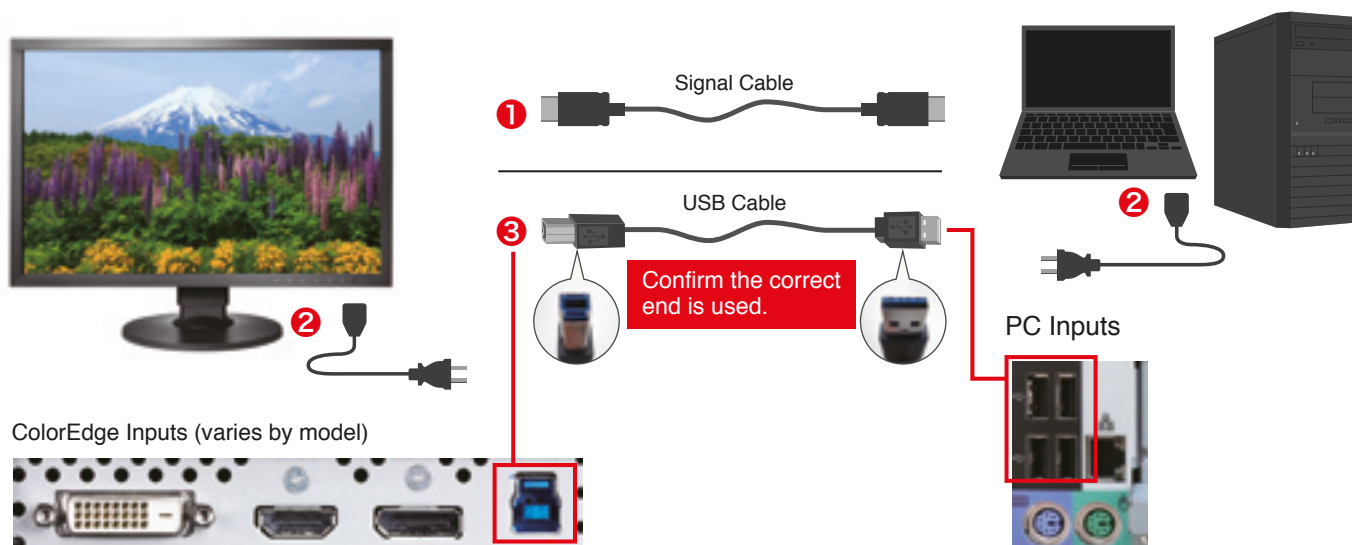


# Software Installation

## 1 Connecting the Monitor

While referring to your monitor's setup guide, follow these steps.

- 1 Connect your ColorEdge monitor to your computer using the signal cable.
- 2 Connect your ColorEdge monitor and the computer to the power using the power cables.
- 3 Connect your ColorEdge monitor to the computer using the USB cable.

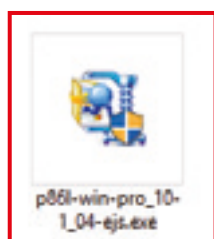


## 2 Printer Driver Installation

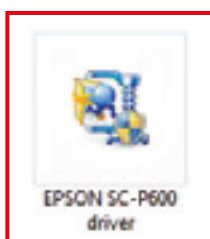
### For Windows

Insert the utility disc that came with your printer or download the appropriate drivers from the manufacturer's website.

Double click on the DVD drive or installation file you downloaded.



Canon



Epson

### For Mac

Download the appropriate drivers for your printer from the manufacturer's website.

Double click the installation file you downloaded.



Canon



Epson

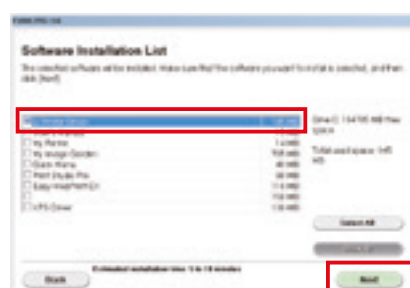
Follow the instructions on your screen to carry out installation.



## For Canon Printers



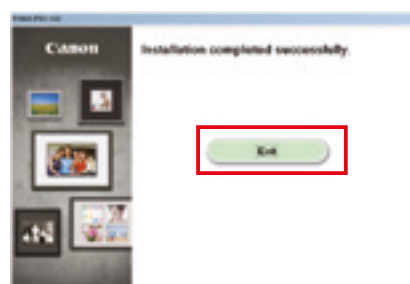
When the installation window appears, click **Next**. Select how you will connect to the printer (Network or USB) and click **Next** again.



From the list, check IJ Printer Driver and click **Next**.



Continue to click **OK** and **Next** until you reach the end of the installation process.



When the installation is complete, click **Exit**.

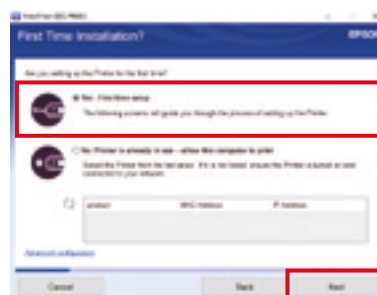
## For Epson Printers



When the installation window appears, click **Start & Connection**.



Check the box to agree to the terms of the license and click **Next**.



Select **First time setup** and click **Next** and **OK**.



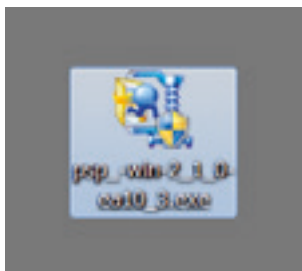
Select how you will connect to the printer (Wifi, Ethernet, or USB) and click **Next**. When the installation is complete, click **Finish**.

# Software Installation

## 3 Print Plugin Installation

### For Canon Printers

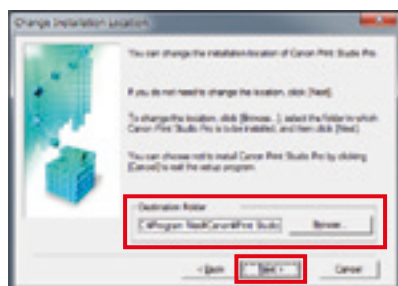
Canon Print Studio Pro Ver. 2.2.0



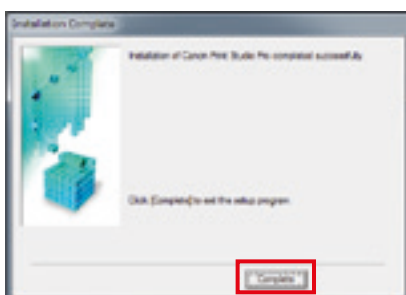
Double click the print plugin installation file to begin.



Proceed with the installation by clicking **Next** and **Yes**.



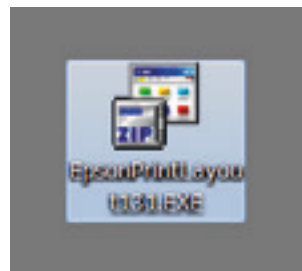
Confirm the installation location and click on **Next** and **Yes**.



Click **Complete** to finish the installation.

### For Epson Printers

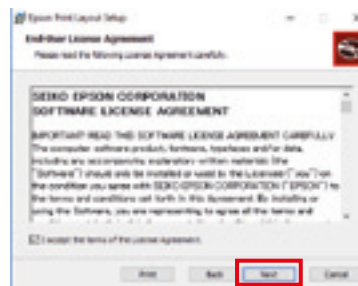
Epson Print Layout Ver. 1.3.5



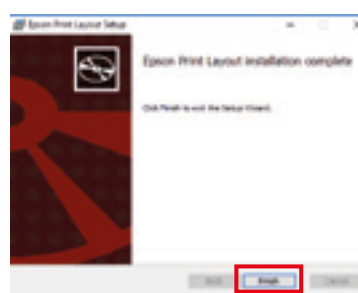
Double click the print plugin installation file to begin.



Proceed with the installation by clicking **Next**.



Check the box to agree to the terms of the license and click **Next**.



Click **Finish** to complete the installation.

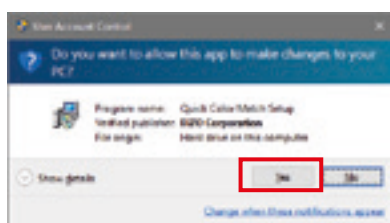


## 4 Quick Color Match Installation Guide

Download Quick Color Match for free by visiting:  
[www.eizoglobal.com/i/download/qcm](http://www.eizoglobal.com/i/download/qcm)

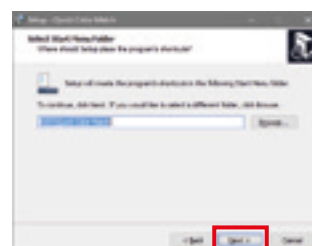
### For Windows

1



Double click the Quick Color Match installation file to begin. Click **Yes** to allow the installation to continue (Windows).

4



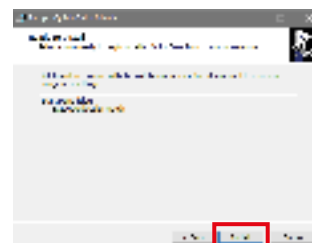
Confirm the installation location and click **Next**. Click **Next** again in the next window.

2



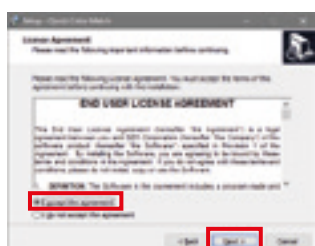
Proceed with the installation by clicking **Next**.

5



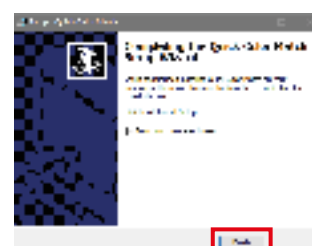
Finally, click **Install**.

3



Check the box to agree to the terms of the license and click **Next**.

6



Click **Finish** to complete the installation.

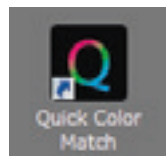
# Using Quick Color Match

This guide explains how to use Quick Color Match software with Photoshop CC / CS6.

## For Windows

1

Double click the Quick Color Match icon on your desktop.

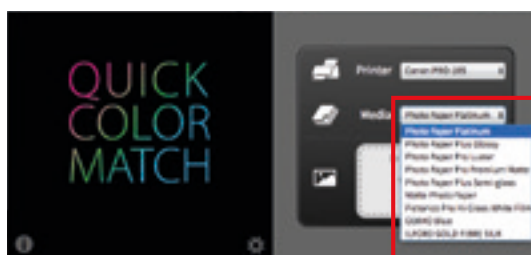


2



The Quick Color Match menu will appear. Confirm that the printer you will use is selected.

3



Select the paper type you will use from the list of media supported by Quick Color Match.

4



Drag and drop the image you want to print onto the Quick Color Match menu. Supported file formats are JPEG, TIFF, and PSD. Be sure to process RAW data files beforehand.



5

Settings in Photoshop will automatically be adjusted to the ideal settings and the color matched image will be displayed on your screen.



If you need to further edit your photo, continue to retouch in the Photoshop window.

■ See the Quick Color Match user's manual for using other software applications.  
[www.eizoglobal.com/i/qcm-manual/](http://www.eizoglobal.com/i/qcm-manual/)



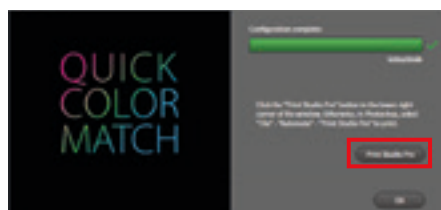
Quick Color Match saves adjustment results under your ColorEdge monitor's Custom preset. This setting will display the correct colors on your screen so do not change modes.



Do not change modes!

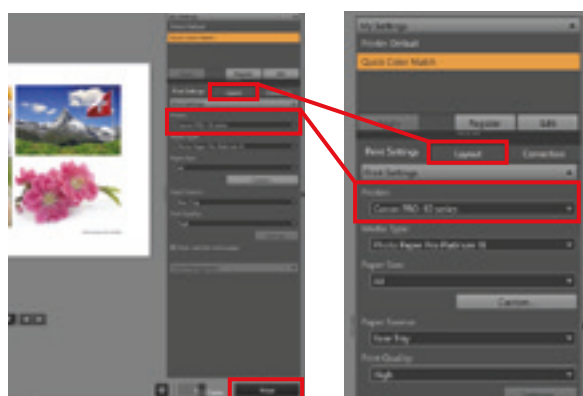
6

To print, click on the button with the name of your print plugin software in the lower right corner of the Quick Color Match window.



## For Canon Printers

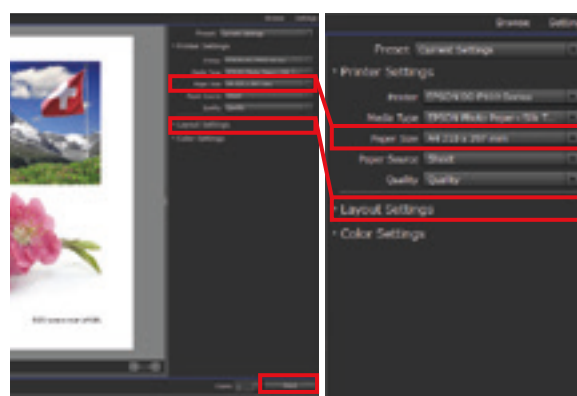
### Using Print Studio Pro Plugin



Choose the paper size and layout, then click **Print**.

## For Epson Printers

### Using Epson Print Layout Plugin



Choose the paper size and layout, then click **Print**.

### \ **Quick Point!** /

Quick Color Match automatically adjusts the printer to the ideal color settings so you do not need to make any changes. Now you can print your photo without worrying about navigating through several windows of technical settings and options.

**Color  
Matching  
Complete!**

**Great**

Confirm that your photo matches your screen by viewing it under a 5000 K light source. Now enjoy printing even more photos with confidence!





## Further increase your matching precision

**ColorNavigator 7 is EIZO's own color management software for producing predictable color results. It allows you to carry out calibration with your ColorEdge monitor's built-in sensor or the optional EX3 external sensor and manage advanced user-desired target values for further improving color matching.**

### ColorNavigator 7



Calibration Sensor  
**EX3**

### **EIZO** Corporation

153 Shimokashiwano, Hakusan, Ishikawa 924-8566 Japan  
Phone +81-76-277-6794 Fax +81-76-277-6793

[www.eizoglobal.com](http://www.eizoglobal.com)

All product names are trademarks or registered trademarks of their respective companies. ColorEdge and EIZO are registered trademarks of EIZO Corporation. Adobe product screenshots reprinted with permission from Adobe Systems Incorporated. Specifications are subject to change without notice.

Copyright © 2018 EIZO Corporation. All rights reserved.(180705)