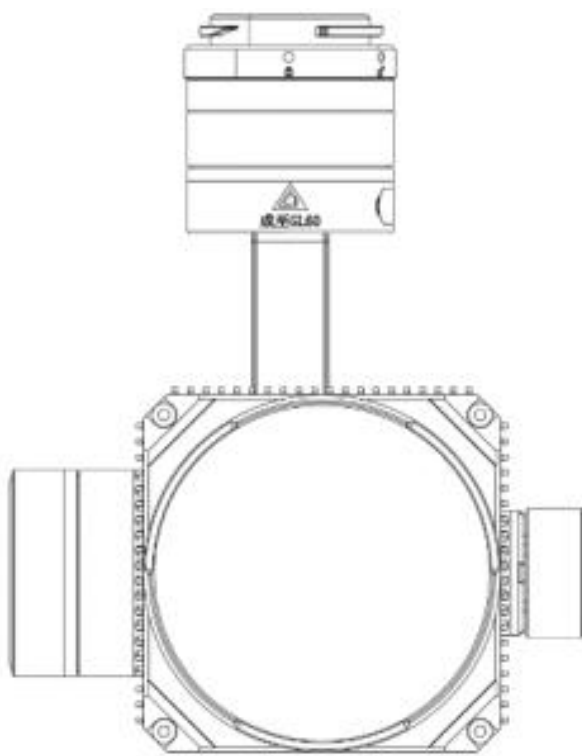


Manual of the GL60 UAV Gimbal Light

User's Manual V1.0

2020.06.20



Catalogue

I. Gimbal Light series introduction

II. Disclaimers and warnings

III. The introduction of GL60

IV. The Gimbal Light Software Tutorial

V. The firmware update

I. Gimbal Light series introduction

This series of products can be used for UAV, film and television shooting, night patrol search light, Power line inspection, emergency lighting, etc.

Through the DJI SkyPort V2.0 interface, this product can be directly mounted on DJI M300 RTK/M200 V2 for use.

II. Disclaimers and warnings

Thank you for purchasing our intelligent products. The content mentioned in this article is related to your safety and legal rights and responsibilities. Before using this product, please read this article carefully to ensure that the product has been set up correctly. Ignoring the instructions and warnings in this article may cause harm to you and those around you, and may damage this product or other nearby item. The right to interpret this document and all related documents shall remain with us. If there are any updates, forgive us for not notifying you specifically.

Please visit www.gzczzn.com for the latest product information.

Cautions:

GL60 is a precision optical equipment, the body needs a high seal for dust and water proof. If there is any problem with the hardware, please send it back to the manufacturer and contact after-sales service. You must not disassemble and repair by yourself, otherwise you will lose the warranty and maintenance qualification.

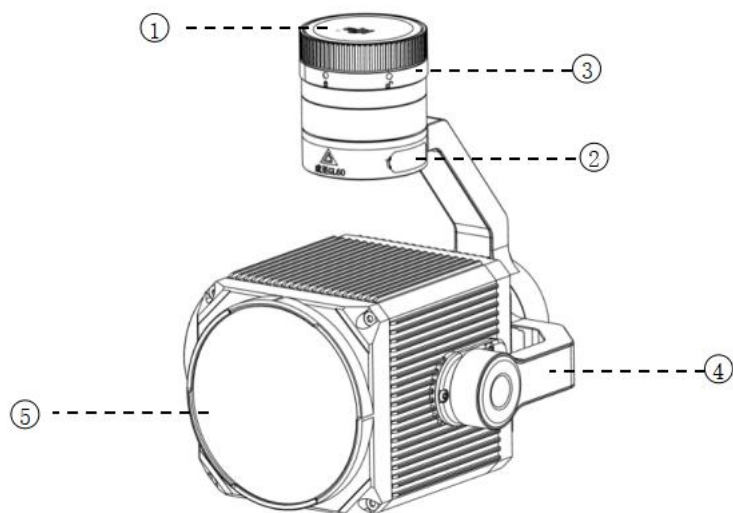
NOTE:

1. The installation method of GL60 is the same as that of DJI the PTZ camera. Please confirm whether the installation is correct before taking off.
2. When GL60 works before the UAV takes off, its power will be limited below 50%; After take-off, the power can reach 100%.

III. The introduction of GL60

GL60 only weighs 495 grams and has a rated power of up to 65W. Through an optical imaging structure composed of five lenses, it emits a sharp light column with only 12 degrees of Angle, with an effective irradiation distance of up to 200 meters. Its brightness uniformity and color uniformity are extremely high, providing unprecedented aerial lighting for unmanned aerial vehicles operating at night. Through the DJI SkyPort V2.0 interface, this product can be directly mounted on DJI M300 RTK, M200 V2 for use.

Connect DJI Pilot APP to control switch, switch regular light and flash mode, and automatically follow the rotation of the PTZ camera. The GL60 UAV Gimbal Lights is the best night partner for DJI M300 RTK drone. It has a fan - free fuselage to achieve a fully sealed design, providing excellent waterproof and dustproof performance, can work reliably in harsh weather conditions. It has an advanced automatic temperature control system, and the light attenuation after 1000 hours of operation is less than 5%.



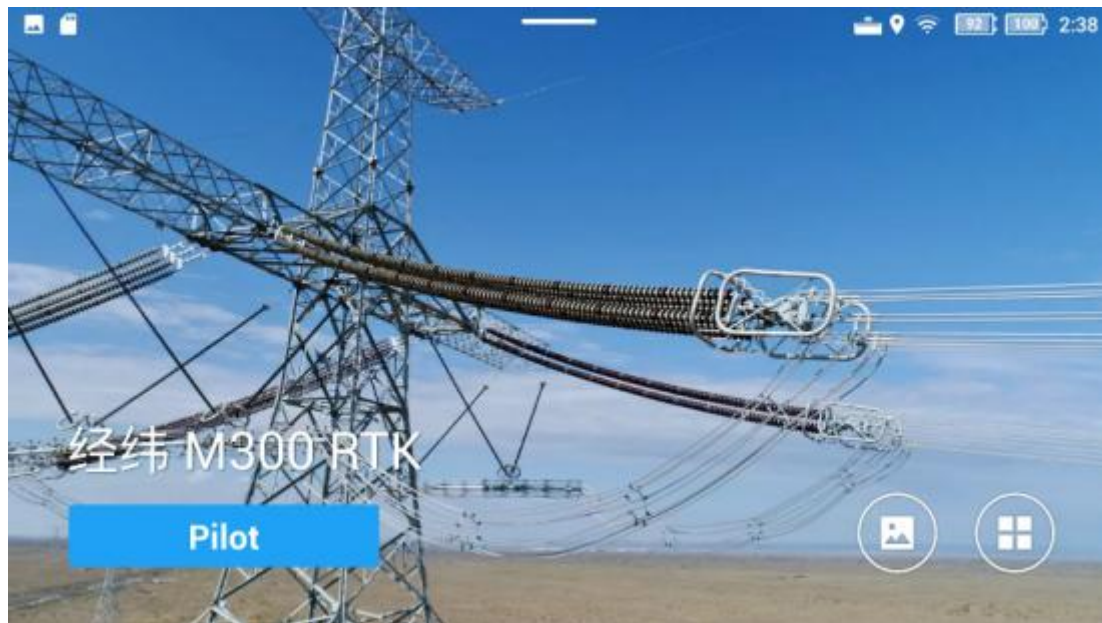
1. Dust cover 2. the DJI SkyPort V2.0 interface 3. Memory card slot
4. UAV 3-axis gimbal 5. The light export

Product parameters

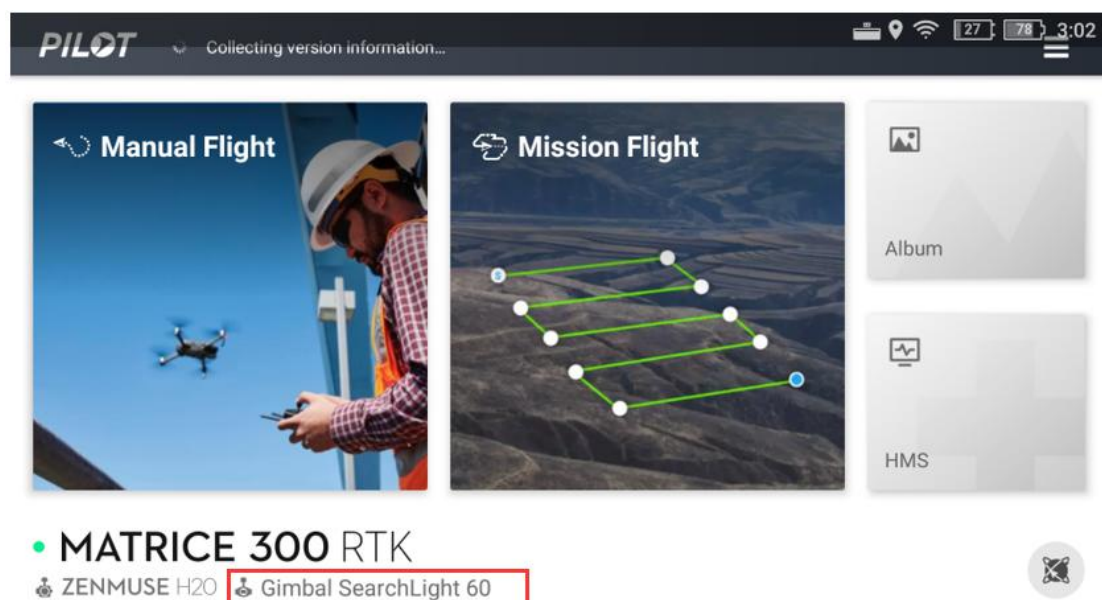
The Prime version of GL60			
Electrical interface	DJI SkyPort V2.0		
Size/mm	L132*W110*H137		
Weight/g	495		
The total power/w	65		
The LED power/w	60		
Luminous flux/lm	4000±3%		
FOV/°	12		
Effective distance/m	150	100	50
Effective area/m ²	780	347	87
Central illumination/Lux	6	18	52
Controllable Angle	Pitch Angle	-135°~+60°	
	Horizontal Angle	Omnidirectional (360°)	
Working temperature	-20°C~+40°C		

IV. The Gimbal Light Software Tutorial

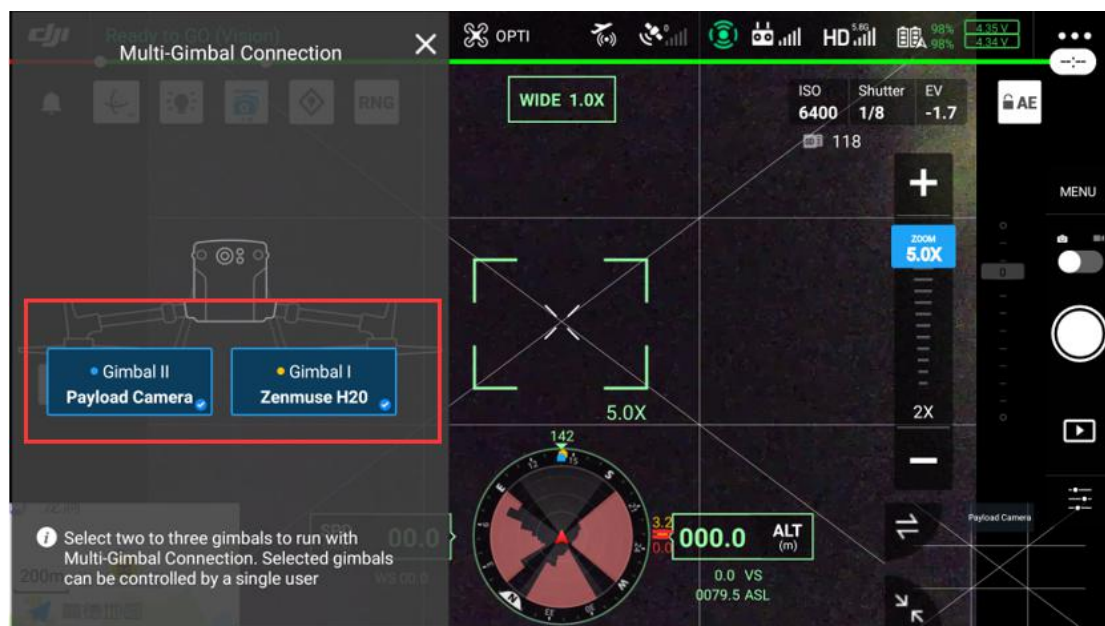
1. Click DJI Pilot to enter the main interface.



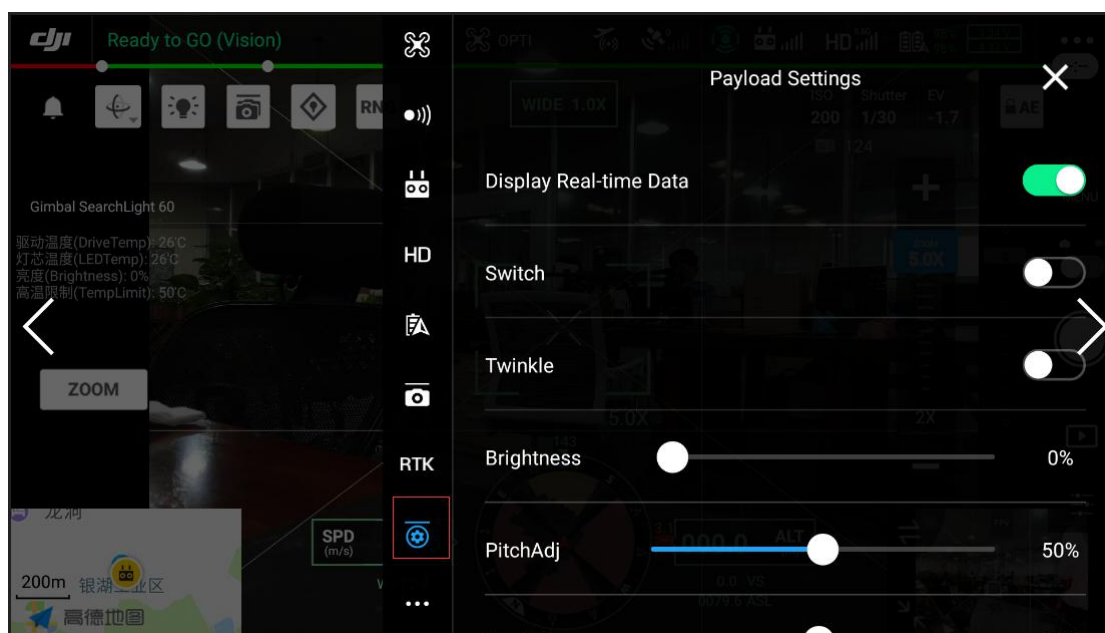
2. Enter the main interface and the word Gimbal SearchLight 60 is displayed in the lower left corner, indicating that the LOAD identification of GL60 is successful. You can proceed to the next step and click manual flight.



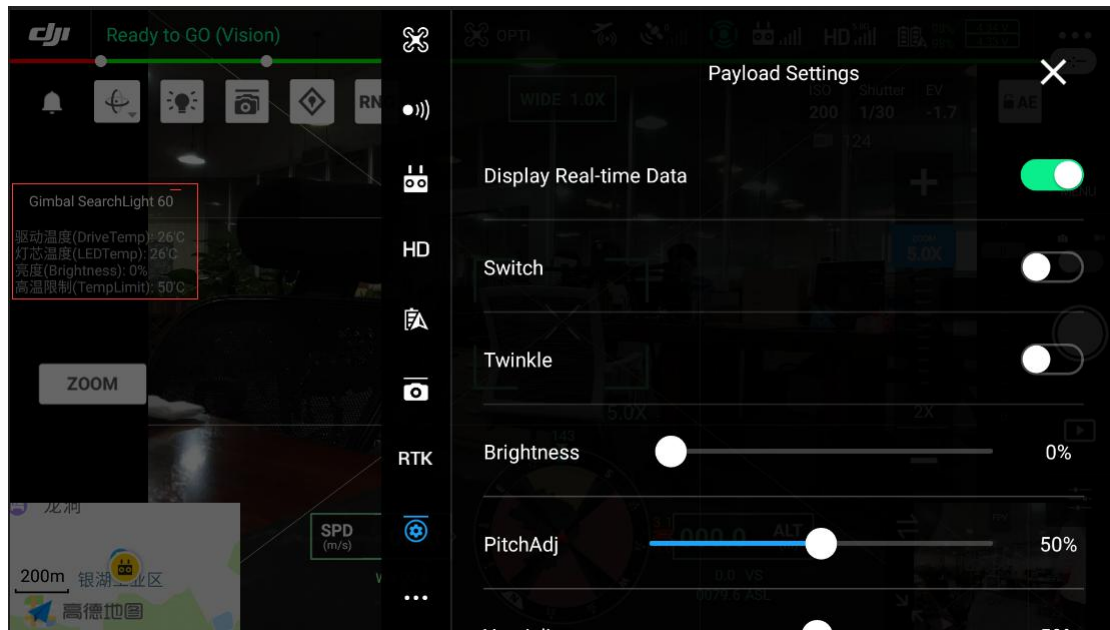
3. Enter the main interface and then click the Multi-Gimbal Connection button, and then select the GimbalI and GimbalII, achieve the result of two Gimbals synchronization.



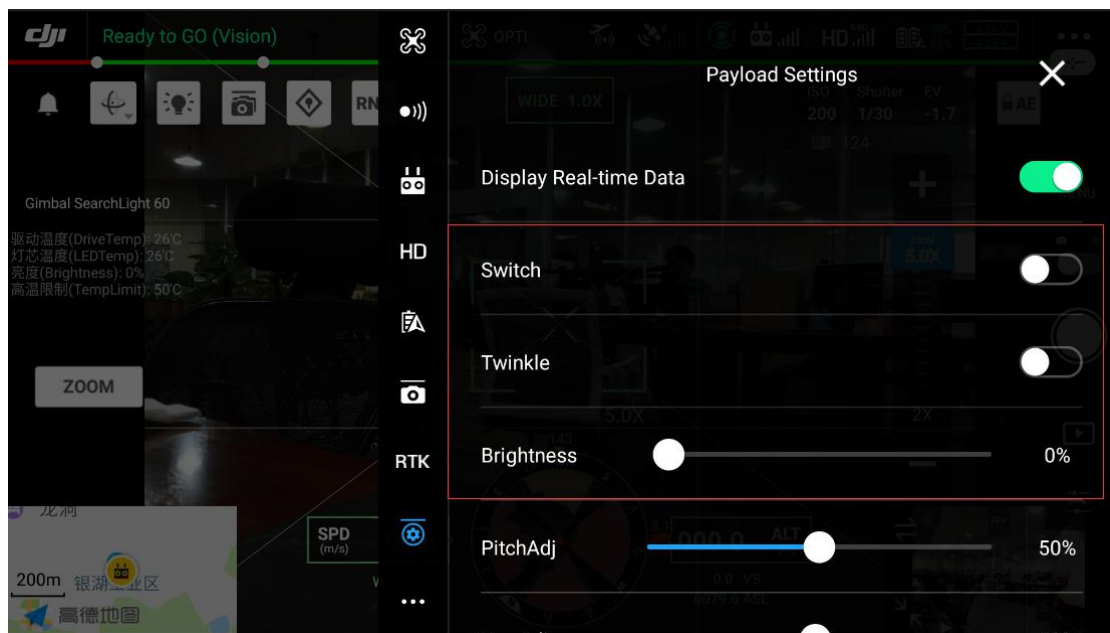
4. Click the menu bar and click the third-party load option to enter the GL60 operation interface.



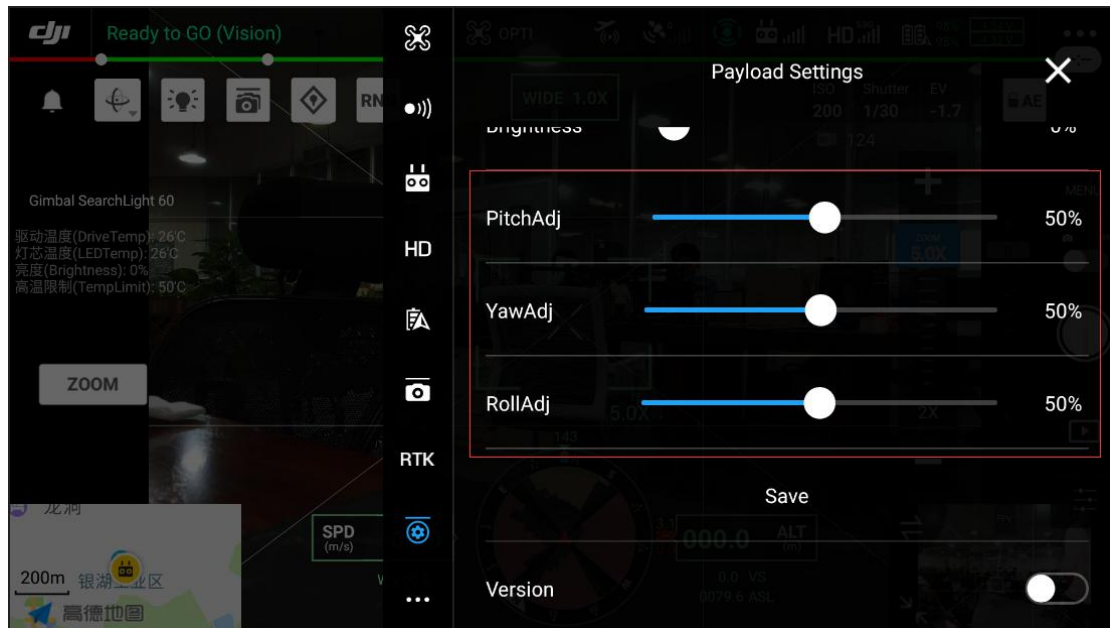
5. Click the button to display real-time data, and a status display box will pop up in the upper left corner of the main interface to observe real-time temperature, power and other parameter states of GL60.



6. Click the switch button to control the on-off state of the light; Click the Twinkle button to turn on the flash mode. Slide the Brightness bar option to adjust the brightness of the GL60.



7. When H20 and GL60 are used simultaneously, the Pitch adjustment button, Roll adjustment button and Yaw adjustment button can be used to keep the spot in the center of the screen. Click the save fine adjustment button after a single fine adjustment.



8. When observing the target, if the camera is overexposed, it can be adjusted by the aperture button on the sliding screen.



V.The firmware update

For firmware update of GL60 UAV Gimbal Light or download the latest version, please pay attention to www.gzczzn.com.

If the Light cannot work properly due to the firmware update of UAV, please contact the local agent or manufacturer in time.